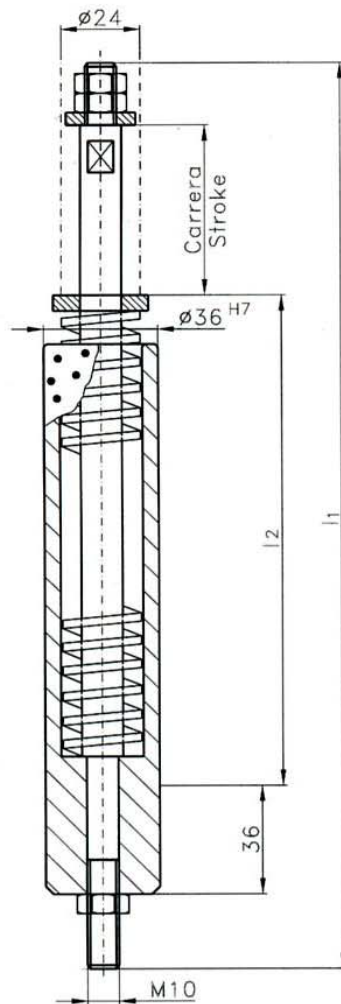


ELEVADOR DE MUELLE (SPRING ELEVATOR)

5395



MATERIAL: C-45

Superficie de deslizamiento
con lubricante sólido

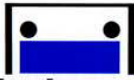
FORMA DE PEDIDO: 5395-referencia

MATERIAL: C-45

Sliding surface with solid lubricant

HOW TO ORDER: 5395-reference

REF.	CARRERA STROKE	l1	l2	TENSIÓN PREVIA PREVIOUS TENSION	FUERZA DE MUELLE SPRING STRENGTH
5395 - 1	50	290,0	155,0	115 N	640 N
5395 - 2				185 N	1030 N
5395 - 3	65	343,5	193,5	91 N	630 N
5395 - 4				149 N	1030 N
5395 - 5	80	392,5	227,5	83 N	640 N
5395 - 6				134 N	1030 N



normalizados matricería

FABRICANTE EXCLUSIVO

NORMAT

DESPIECE ELEVADOR DE MUELLE (SPRING ELEVATOR ASSEMBLY)

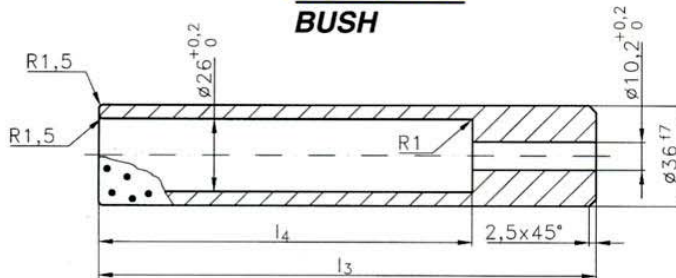
5395

NORMAT

MATERIAL: C-45

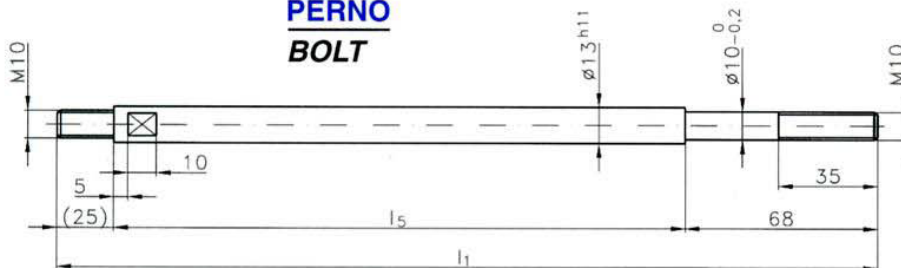
MATERIAL: C-45

CASQUILLO BUSH



REF.	I3	I4
5395 - 1	176,0	132,0
5395 - 2		
5395 - 3	214,5	170,5
5395 - 4		
5395 - 5	248,5	204,5
5395 - 6		

PERNO BOLT

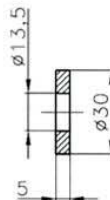
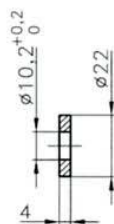


MATERIAL: C-45

MATERIAL: C-45

REF.	I1	I5
5395 - 1	290,0	197,0
5395 - 2		
5395 - 3	343,5	250,5
5395 - 4		
5395 - 5	392,5	299,5
5395 - 6		

ARANDELA WASHER



MATERIAL: 9S-MN-28K

MATERIAL: 9S-MN-28K